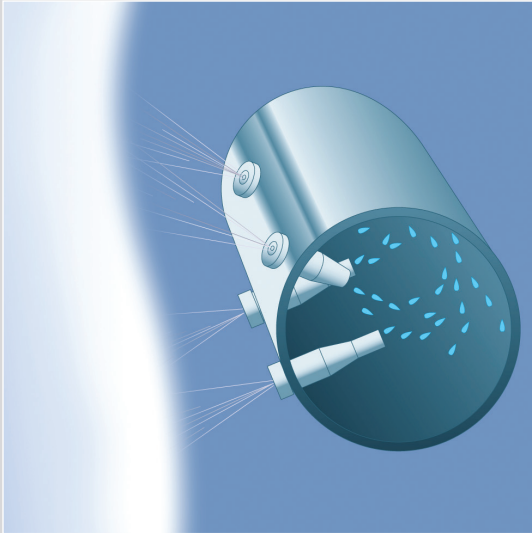


Herricane CS Series

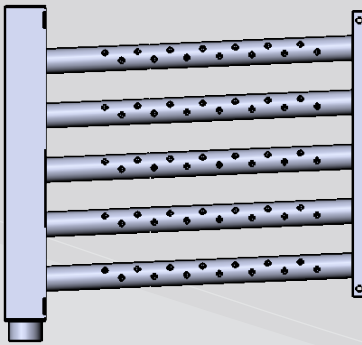
Steam Distribution Systems



PRODUCT DATA SHEET



Our proven, metered nozzle design extends into the manifold to allow only the driest steam to discharge evenly across the entire length of the manifold.



CS-3113 shown

Introduction: Quiet, Solid Reliability

The Herricane™ CS Series is designed to precisely meter steam from either a central boiler or a humidifier with zero maintenance and 96.4% energy efficiency. Every component of the Herricane™ steam distribution system is constructed entirely of stainless steel.

At our leading-edge test facility, research has proven that under specific conditions, a Guaranteed Evaporation Distance, heat gain, and static gain can be offered on the entire CS series. Each system is also tested with pressurized steam to assure quality and a trouble free service life.

TRION® has built in the kind of reliability that eliminates a two-fold servicing nightmare: the limited accessibility of an in-duct humidification installation that not only makes servicing difficult, but often hides the fact that service is required... until it's too late.

Features & Benefits:

- Purity of Steam Humidification
- Zero Maintenance
- Full Factory Tested Before Shipment
- Flexible Enough to Employ Steam from Any Source
- Stainless Steel Precision Nozzles
- Quiet Operation
- Horizontal or Vertical Airflow Applications

Applications:

- Laboratories
- Cleanrooms
- Paper Storage & Handling
- Office Buildings
- Hospitals / Clinics / Medical Offices
- Manufacturing Plants
- Semiconductor Manufacturing
- Printing Operations
- Museums
- Research Facilities

Warranty:

- 3-Year Limited Warranty on Distribution Systems (1-Year on Accessories)

PRODUCT DATA SHEET

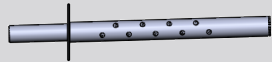
Unit Specifications:

Model	1100	1101	1103	2105	3110	3113	3115	3119	4111	4116
Maximum Capacity (lbs/hr)	50	50	100	500	500	125	1400	2000	500	1600
Maximum Length	6'	6'	6'	10'	10'	10'	10'	10'	10'	10'
Maximum Height	N/A	N/A	N/A	N/A	8'	8'	8'	8'	8' W	8' W
Tube Diameter	1.75"	1.75"	2"	1.75"	1.75"	1.75"	2"	2"	1.75"	2"
Header Size	N/A	N/A	N/A	N/A	3"	3"	4"	4"	3"	4"
Supply Connection	1.5" FPT	1.5" Tube	2" FPT	2" FPT	1.5" or 2" FPT	1.5" or 2" FPT	2" FPT	2" FPT	1.5" FPT	2" FPT
Drain Connection	.5" FPT	N/A	.5" FPT	.75" FPT	.75" FPT	N/A	.75" FPT	.75" FPT	.75" FPT	.75" FPT
Tube Direction	Horizontal	Horizontal	Horizontal	Horizontal	Horizontal	Horizontal	Horizontal	Horizontal	Vertical	Vertical
Airflow Direction	Horizontal	Horizontal	Horizontal	Horizontal	Horizontal	Horizontal	Horizontal	Horizontal	Horizontal	Horizontal

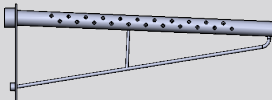
Vertical airflow configurations are available upon request.



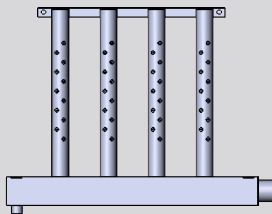
CS-1100



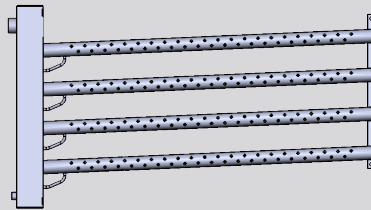
CS-1101



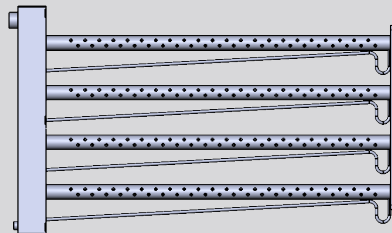
CS-2105



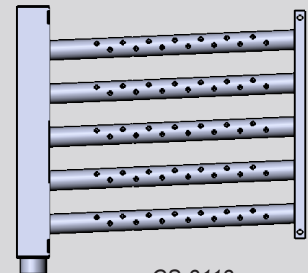
CS-4111



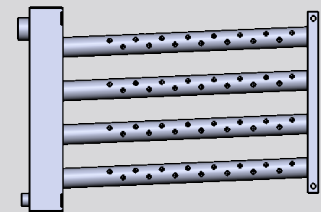
CS-3115



CS-3119



CS-3113



CS-3110

Indoor Air Quality Since 1947

ISO 9001:2015 Certified

Industry Membership:



Proudly Designed,
Engineered, and
Manufactured in the USA.*



*Manufactured with domestic and foreign components.

To help serve you better,
please contact us at:

800-884-0002 (tel)

800-458-2379 (fax)

TRION®

101 McNeill Road
Sanford, NC 27330

www.trioniaq.com

customerservice@trioniaq.com

TRION® is a registered trademark of Air System Components, Inc. Air System Components, Inc. is a subsidiary of Johnson Controls Inc. All product specifications reflect available information at the printing of this brochure. TRION® reserves the right to revise or modify products and/or specifications without notice. © 2018 TRION®