

# AIR BOSS<sup>®</sup> ES CELL-G

Electrostatic Replacement Cell

## Installation & Operation Manual



**TRION<sup>®</sup>**  
air purification systems

A **FEDDERS<sup>®</sup>** ENGINEERED PRODUCTS COMPANY

### Contact Information

#### Headquarters

**Trion, Inc.**  
101 McNeill Rd.  
Sanford, NC 27330  
Tel. 800 884 0002  
Fax 800 458 2379  
www.trioninc.com  
sales@trioninc.com

**Fedders International**  
No. 728 Fuzhou Rd.  
Rm. 3002-3005  
Raffles City Office Tower  
Shanghai, P.R. China, 200001  
Tel. 86 21 6340 3232  
Fax. 86 21 6340 3867

**Trion Ltd.**  
The Cavendish Center  
Winnall Close  
Winchester, Hampshire  
SO23 0LB, UK  
Tel. 44 0 1962 840465  
Fax 44 0 1962 828619

**Fedders International**  
A-30, Chintels House  
Kalish Colony  
New Delhi, India 110048  
Tel. 91 11 5173 0730  
Fax 91 11 5173 0743

**Trion GmbH**  
Boscstr. 60  
D-50171, Kerpen  
Germany  
Tel. 49 0 2237 922 103  
Fax 49 0 2237 922 104

**Fedders International**  
128 Joo Seng Road  
#05-01  
DP Computer Building  
Singapore 368 356  
Tel. 65 6286 0995  
Fax 65 6286 0859

Manual Part Number 157331-001- May 2004

## **SPECIFICATIONS: CELL-G**

Power Consumption:	75W max @ 120 VAC
Ionizer Voltage Range:	10-12 KVDC
Collector Voltage Range:	5-6 KVDC
Maximum Airflow Temp: (Through Cells)	140 F (60 C)
Maximum Cell Washing Temperature:	160 F (71 C)
Weight:	39 lbs (17.7 kg)
Dimensions:	20.69" L x 14.13" W x 18.43" H (525.5 x 358.8 x 468.1 mm)

## **INSTALLATION**

### **1. UNPACK AND INSPECT**

Upon receipt, all shipping containers and their contents should be examined for damage. Any damage occurring in shipment must be immediately reported to the carrier, an inspection report completed and a claim filed with the carrier at the receiving point.

The Cell-G filter is shipped assembled. Please check to ensure all additional components are included:

- 2 acorn nuts
- 2 spring contacts
- 2 flat washers

### **2. INSTALLING THE Cell-G FILTER**

The Cell-G can be used in conjunction with or independent of the competitor's collection cells inside their cabinet. Simply slide the cell into the cabinet making sure the insulated springs make contact with the power source or an adjacent cell.

## **MAINTENANCE**

---

### **WARNING !**

---

#### **Sharp Edges Can Cause Personal Injury**

Wear protective gloves to prevent cuts from sharp edges.

---

### **WARNING!**

---

#### **Electric Shock Hazard Can Cause Personal Injury or Death**

The following procedures will expose hazardous electrically charged parts. Disconnect power before proceeding.

---

## **CLEANING FILTER**

The IONIZER/COLLECTOR CELL(S) should be removed from the unit periodically and soaked in a solution of hot water and a commercial detergent for 2 to 4 hours. Your Trion Distributor carries a detergent, called Tri-dex, specially formulated for cleaning collector cells. The frequency of cleaning is dependent on the contaminant being collected. Liquid aerosol is virtually self cleaning while welding smoke may require accumulation being blown or rapped off every few days. Collector cells should be kept clean for maximum efficiency.

### **Wash Dirt Collecting Elements**

1. Turn the control switch OFF and disconnect power to the unit.
2. Open the cell access door.

3. Remove ionizer/collector cells and wash in hot detergent water. If the collected contaminant is of an extremely dry nature it can be blown from the collecting cells with a pressure hose or removed by gently tapping the end plate of the cell. When blowing or tapping cell clean, carry cell outdoors.
4. Remove the mechanical pre-filter. Remove collected dust or lint by vacuuming or brushing. Wash with warm, soapy water.
5. Rinse all components thoroughly in warm, clear water and permit them to DRIP DRY THOROUGHLY.
6. Replace pre-filter and ionizer/collector cells. BE SURE AIR FLOW ARROW POINTS TOWARDS BLOWER.
7. Close access door, reconnect power to the unit.
8. Turn control switch to "ON". If arcing occurs or the indicating light flickers, the components may still be damp. Simply shut off and allow more time to dry.

---

### **CAUTION !**

---

Do not run objects, such as a bottle brush, between the plates of the cell. This might change the plate spacing or damage the ionizer plates.

---

### **REPLACEMENT PARTS ORDERING INFORMATION**

The following page contains exploded views and Replacement Parts for the Trion Cell-G. Use it to determine the part numbers of items which are needed.

Contact Trion for replacement parts.

### **LIMITED WARRANTY**

Trion warrants this equipment to be free from defects in workmanship and material for a period of 1 year after shipment. This warranty is limited, however, to the repair or replacement of defective equipment, which is returned, freight prepaid, to manufacturer's factory.

This limited warranty does not apply to any part or component that is damaged in transit or when handling, has been subject to misuse, negligence or accident, has not been installed, operated or serviced according to these instructions, has been operated beyond the factory rated capacity or has been altered in any way.

Trion's liability is limited to replacement of defective parts or components and does not include any cost of labor (including, but not limited to, labor required to remove and/or reinstall any defective part) other than Trion factory labor.

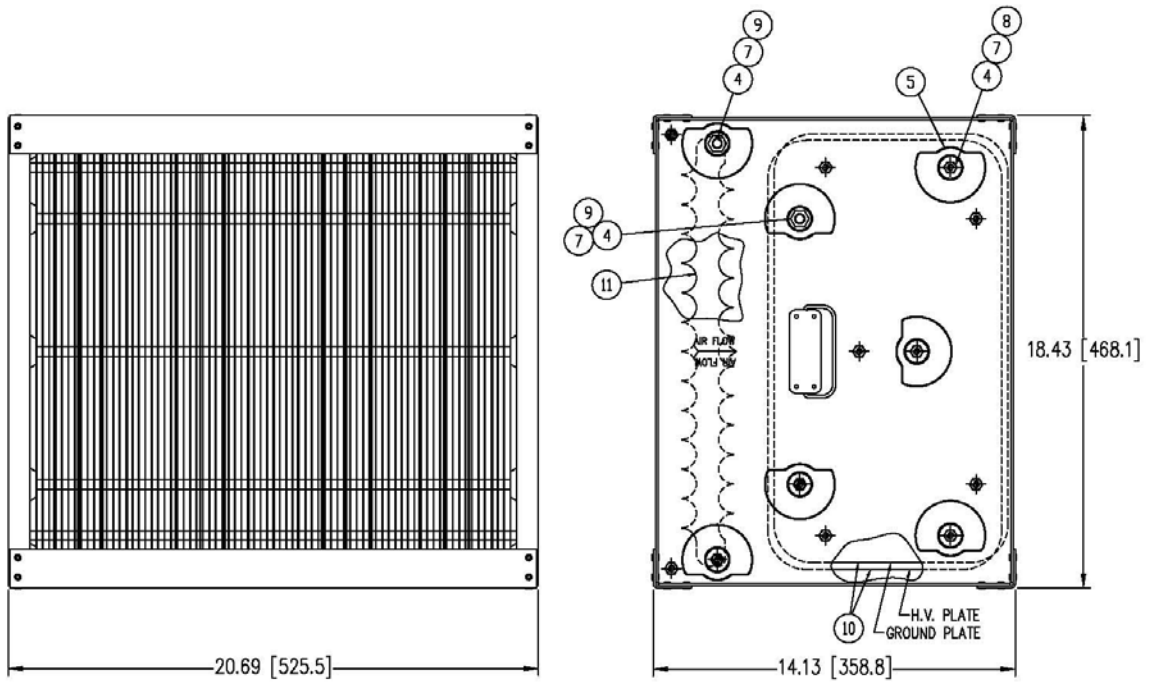
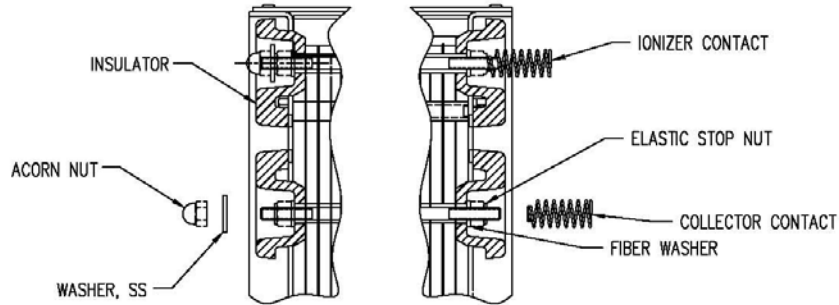
Trion shall not be responsible for loss of use of any product, loss of time, inconvenience, or damage to other equipment or any other indirect or consequential damage, with respect to property, whether as a result of breach of warranty, neglect or otherwise.

**THE WARRANTY AND LIABILITIES SET FORTH ABOVE ARE IN LIEU OF ALL OTHER WARRANTIES AND LIABILITIES, EXPRESSED OR IMPLIED, IN LAW OR IN FACT, INCLUDING ANY IMPLIED WARRANTIES OF MERCHANTABILITY AND FITNESS FOR PARTICULAR PURPOSE.**

The foregoing shall constitute the total liability of Trion in the case of defective performance of all or any of the equipment or services provided to Buyer. Buyer agrees to accept and hereby accepts the foregoing as the sole and exclusive remedy for any breach or alleged breach of warranty by Trion.

## CONTACT ASSEMBLY INSTRUCTIONS:

ASSEMBLE ACORN NUT AND WASHER OR  
SPRING CONTACTS ON THE ENDS OF THE  
TIE RODS TO MATCH THE CONTACT LOCATION  
ON THE CELLS BEING REPLACED



### 457096-001 CELL ASSEMBLY REPLACEMENT PARTS

QTY.	ITEM	TRION PART NO.	DESCRIPTION
2	1	157276-001	SPRING CONTACT
2	2	120608-011	WASHER, SS
2	3	120538-001	ACORN NUT
14	4	123149-001	NUT, ELASTIC STOP
14	5	257093-001	INSULATOR
375	6	220107-073	SPACER, .480"
14	7	121993-006	FIBER WASHER, .25 ID X .06 THICK
12	8	233137-046	TIE ROD, COLD HEADED, GROUND & HV, 16.688"
2	9	222794-048	TIE ROD, H.V., 20.25"
75	10	257091-001	HIGH VOLTAGE & GROUND PLATE
10	11	357094-001	SPIKED IONIZER BLADE